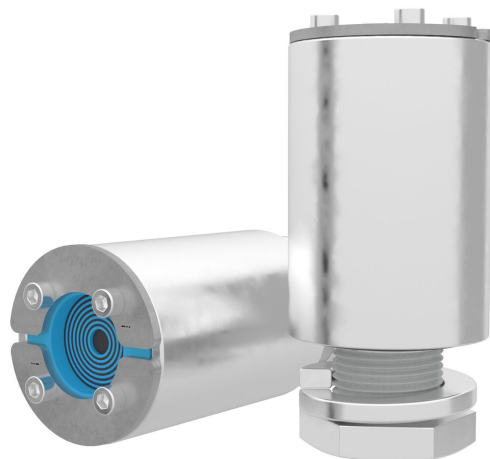




Sistema di sigillatura Roxtec RS con SLA

Sistema di sigillatura per cavi con manicotto adattatore per fissaggio in fori carotati.

Roxtec RS con SLA è un sistema di sigillatura con manicotto in metallo per cavi singoli. Il sistema di sigillatura è composto da due metà con strati removibili che lo rendono adattabile a cavi di dimensioni differenti. Il manicotto è filettato ed è fissato alla struttura con un controdado.



- Compatto
- Perfetto per il retrofit
- Veloce e facile da installare

Caratteristiche



Resistenza al fuoco



A tenuta stagna

Struttura dell'installazione



Metallo

Tipo di montaggio



Imbullonatura

Ratings e certificati

Fuoco

- CLASSE A secondo IMO 2010 FTP Code

Tenuta

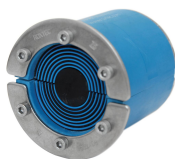
- Acqua: 2,5 bar (catastrofico)

Dati relativi ai componenti

Componenti per la sigillatura



Kit SLA RS



Passaggi circolari RS



Lubrificante

Per informazioni dettagliate, visita la pagina [roxtec.com](https://www.roxtec.com).



Kit pre-configurati

mm/kg



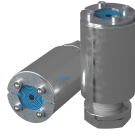
SLA RS 25 AISI316



SLA RS 25 GALV



SLA RS 50 AISI316



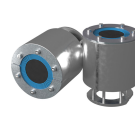
SLA RS 50 GALV



SLA RS 75 AISI316



SLA RS 75 GALV



SLA RS 100 AISI316



SLA RS 100 GALV

Titolo	Configurazione	Dimensioni apertura Ø	Peso	Art. Nr.
SLA RS 25 AISI316	1x (3.6-12.0)	21 - 22	0.28	164386
SLA RS 25 GALV	1x (3.6-12.0)	21 - 22	0.28	164387
SLA RS 50 AISI316	1x (8.0-25.0)	34 - 40	1.1	164388
SLA RS 50 GALV	1x (8.0-25.0)	34 - 40	1.1	164389
SLA RS 75 AISI316	1x (24.0-34.0)	42 - 49	1.8	164396
SLA RS 75 GALV	1x (24.0-34.0)	42 - 49	1.8	164397
SLA RS 100 AISI316	1x (48.0-53.0)	80 - 85	2.9	164404
SLA RS 100 GALV	1x (48.0-53.0)	80 - 85	2.9	164405

The product information provided by Roxtec does not release the purchaser of the Roxtec system, or part thereof, from the obligation to independently determine the suitability of the products for the intended process, installation and/or use.

Roxtec gives no guarantee for the Roxtec system or any part thereof and assumes no liability for any loss or damage whatsoever, whether direct, indirect, consequential, loss of profit or otherwise, occurred or caused by the Roxtec systems or installations containing components not manufactured by an authorized manufacturer and/or occurred or caused by the use of the Roxtec system in a manner or for an application other than for which the Roxtec system was designed or intended.

Roxtec expressly excludes any implied warranties of merchantability and fitness for a particular purpose and all other express or implied representations and warranties provided by statute or common law. User determines suitability of the Roxtec system for intended use and assumes all risk and liability in connection therewith. In no event shall Roxtec be liable for indirect, consequential, punitive, special, exemplary or incidental damages or losses.

The Roxtec products are offered and sold in accordance with the conditions of the Roxtec General Terms of Sales. The latest version of the Roxtec General Terms of Sales can be downloaded from <https://www.roxtec.com/en/about-us/about-roxtec/general-terms-of-sales/>

We reserve the right to make changes to the product and technical information without further notice. Any errors in print or entry are no claims for indemnity. The content of this publication is the property of Roxtec International AB and is protected by copyright.

This document was generated on: 2024-04-18